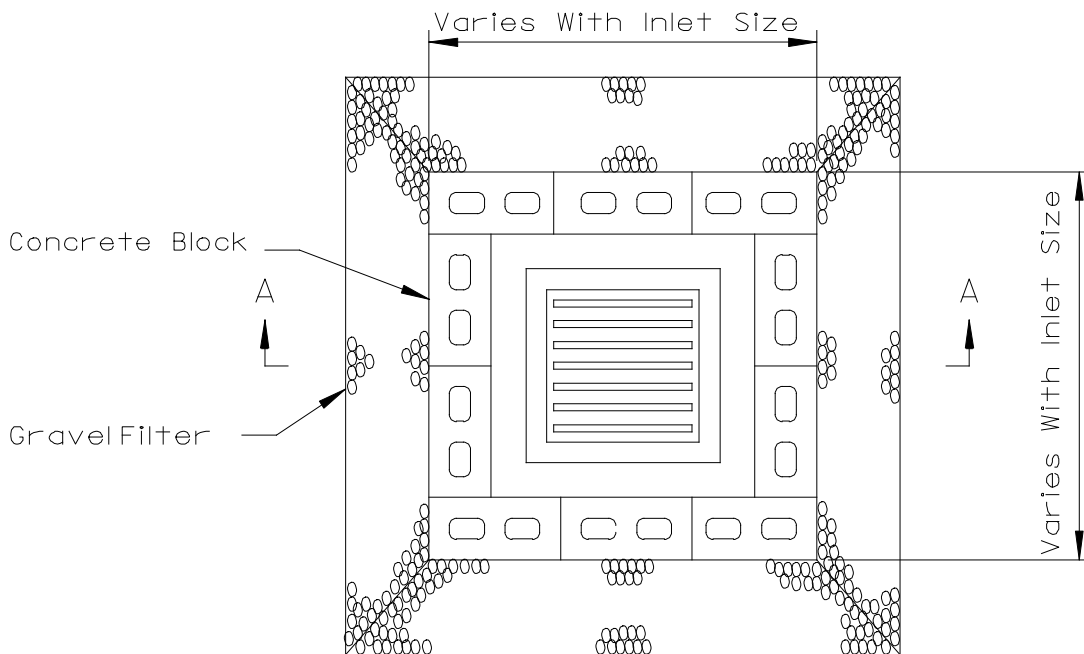
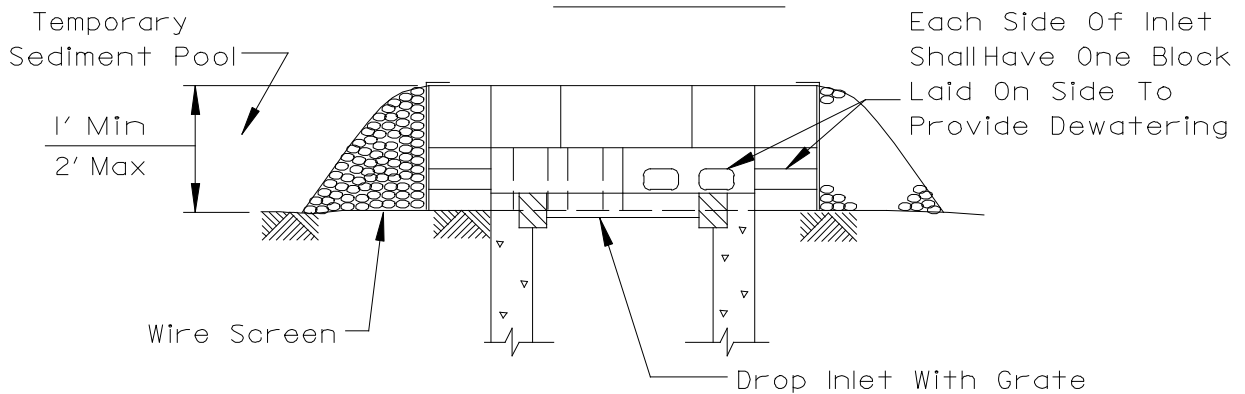


INLET PROTECTION DETAIL - BLOCK AND GRAVEL



PLAN VIEW



SECTION A-A

NOTES:

1. Sediment shall be removed and the trap restored to its original dimensions when the sediment has accumulated to 1/2 the design depth. Removed sediment shall be deposited in a suitable area and in such a manner that it will not erode.
2. The sediment trap shall be removed and the area stabilized when the constructed drainage area has been properly stabilized.
3. The wire screen shall be hardware cloth or comparable wire mesh with 1/2 inch openings.
4. The gravel shall meet requirements for coarse aggregate with IDOT gradations of CA-1, CA-2 or CA-3.

1 OF 1

SHEET

DESIGN BY : DOUG GROVESTEN REVISED : 5/23/2003
 INLET PROTECTION - BLOCK AND GRAVEL

APPROVED BY :
 DATE :

SCALE NONE



CITY OF BLOOMINGTON
 ENGINEERING DEPARTMENT

STANDARD DETAIL: 13.07-D