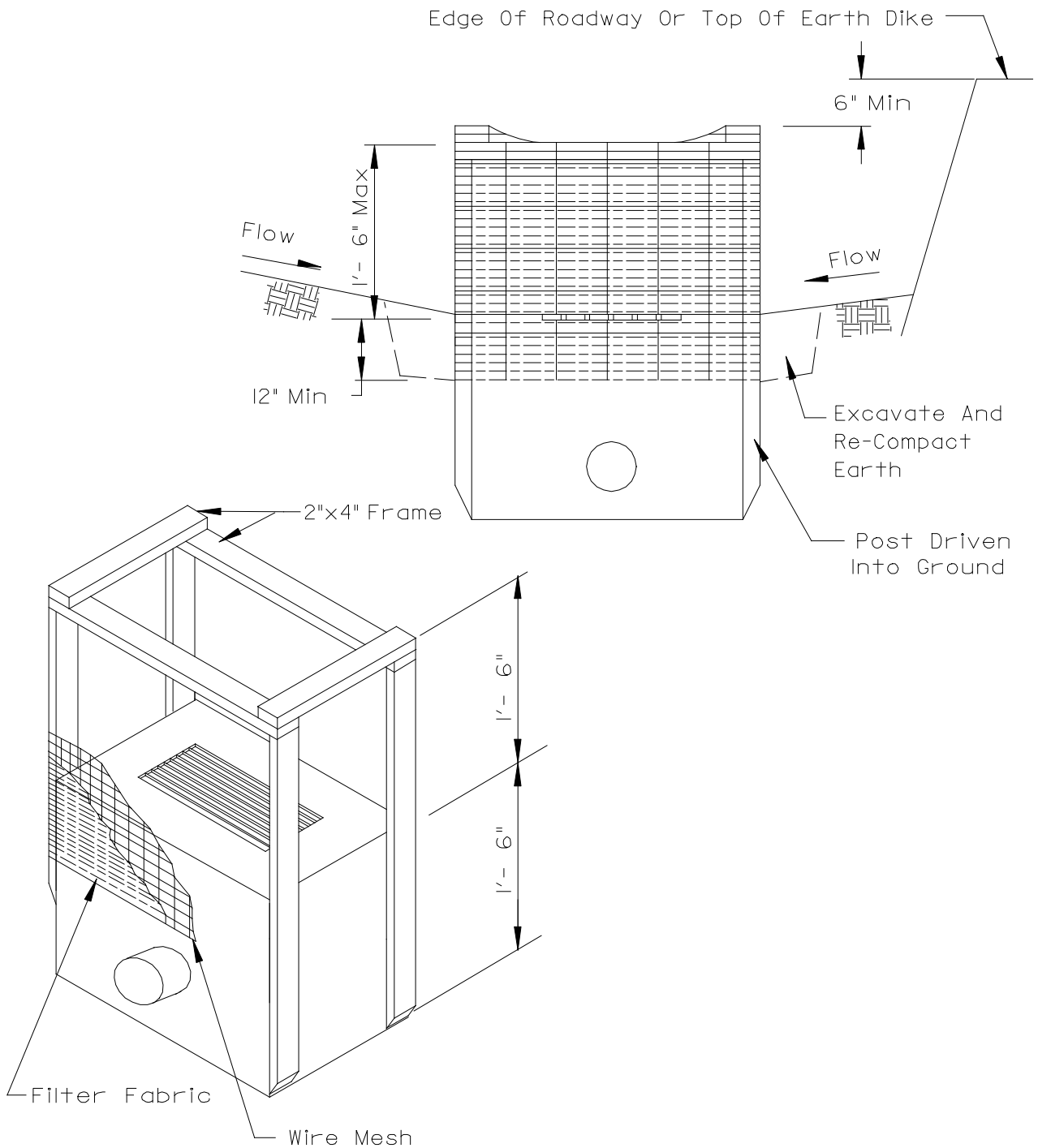


# INLET PROTECTION DETAIL - FABRIC DROP



**NOTES:**

1. Filter fabric shall meet the requirement of material specification 592 GEOTEXTILE table 1 or 2, class I, with an EOS of at least 30 for nonwoven and 50 for woven.
2. The wire mesh shall have a maximum opening of at least 6 inches.
3. Limit drainage area to the inlet protection to 1 acre.

