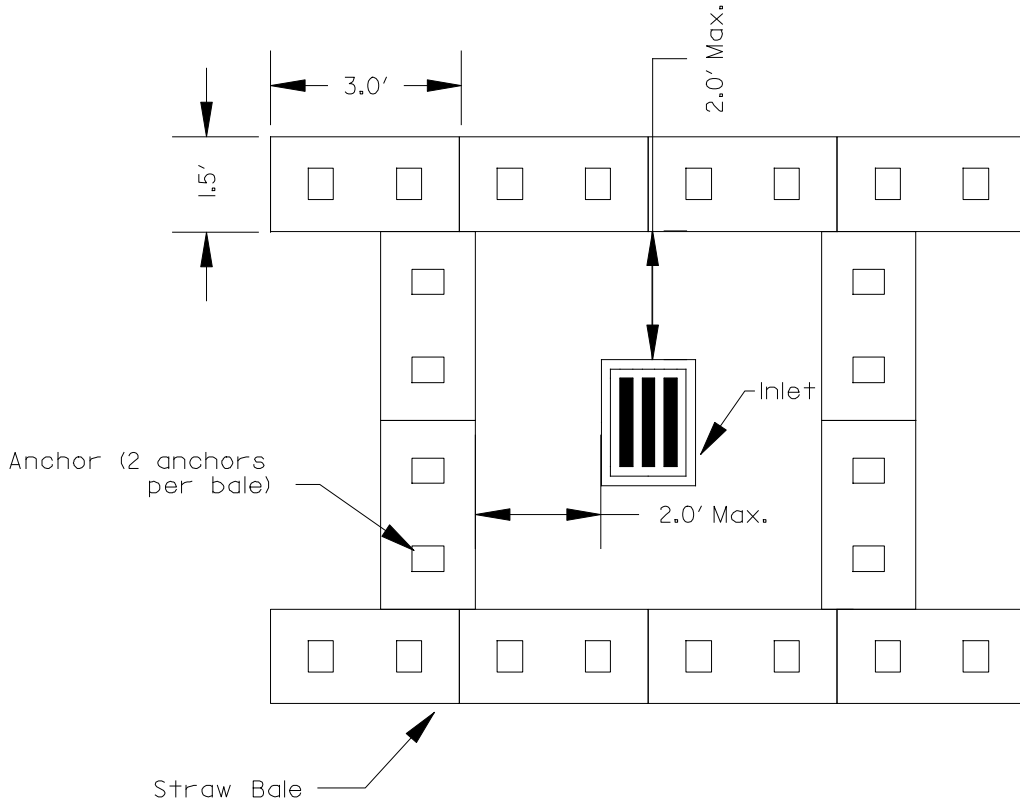
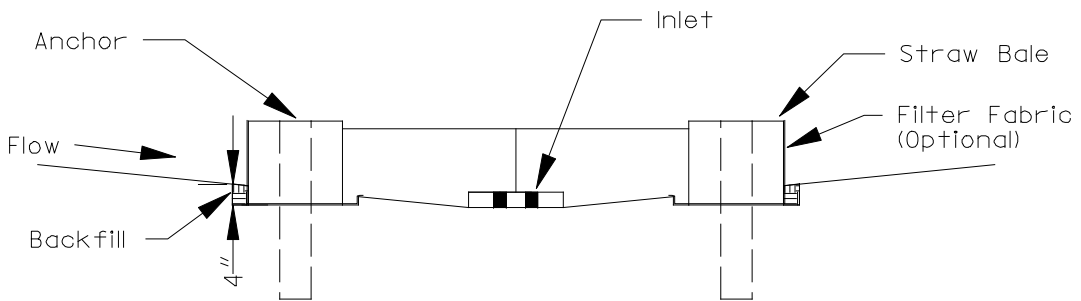


# INLET PROTECTION DETAIL STRAW BALE BARRIER



PLAN



SECTION

- NOTES:
1. The immediate land area around the inlet should be relatively flat (less than 1% slope) and located so that the accumulated sediment can be easily removed.
  2. The inside edge of the bales shall be a maximum of 2 feet from the edge of the inlet.
  3. Filter fabric shall meet the requirements of material specification 592 GEOTEXTILE Table 1 or 2, Class I with AOS of at least 30 for nonwoven and 50 for woven.
  4. Anchors shall be rebar, steel pickets or 2" x 2" stakes, and shall be long enough to extend at least 1.5 to 2.0 feet into the ground when the top is flush with the bale.

